

# Angular Contact Ball Bearings

Bearing No. : **NACHI 7232C**

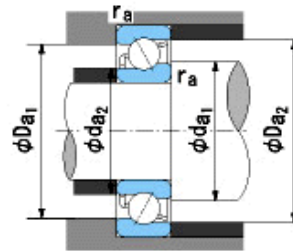
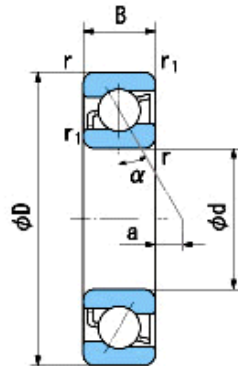
■ Bearing Type

■ Clearance

■ Tolerance Class

## Dimensions

d = 160<sup>0</sup><sub>-0.025</sub>  
 D = 290<sup>0</sup><sub>-0.035</sub>  
 B = 48<sup>0</sup><sub>-0.250</sub>  
 r = 3~5  
 (Radial Direction)  
 r = 3~8  
 (Axial Direction)  
 r1 = 1.1~2.5  
 (Radial Direction)  
 r1 = 1.1~4  
 (Axial Direction)  
 a = 2.4



## Dimensions

da1(min) = 174  
 da2(min) = 167  
 Da1(max) = 276  
 Da2(max) = 283  
 ra(max) = 2.5  
 ra1(max) = 1  
 Mass = 13.7 kg

Basic Dynamic Load Rating Cr : **288,000** N

Basic Static Load Rating Cor : **335,000** N

Limiting Speed ;

Grease Lubrication : **3,600** min<sup>-1</sup>

Oil Lubrication : **4,900** min<sup>-1</sup>

O.D.Surface Runout with Side :

Axial Runout with Bore :

Axial Runout with Raceway :

Width Variation :

Radial Runout :

INNER RING

OUTER RING

O.D.Surface Runout with Side :	-	-
Axial Runout with Bore :	-	-
Axial Runout with Raceway :	-	-
Width Variation :	<b>0.030</b>	<b>0.030</b>
Radial Runout :	<b>0.030</b>	<b>0.060</b>